

Cheadle Hulme



NEWSLETTER

Summer 2007 – June Issue

Editor: George Rogers

Chairman's Letter

It is good to be back in the warm of Manchester and to be back with CHU3A after spending nineteen days during March/April in Southern California, fourteen and a half days of which were cold, with a biting wind – and I only had light clothing with me! I did have a sweater and fleece to put on when I arrived back at Manchester Airport and I wore those every day except at Manchester Airport where it was pleasantly warm!! In future I will think twice before making disparaging remarks about the UK weather.

CHU3A is progressing well so far this year. At the end of April we had 184 members including 26 new ones, which is very gratifying. Do please suggest to your friends and acquaintances that they might like to join. Remember that they can come once as a visitor, at the visitor's rate, which will give them a chance to see what we are like and what we do. They will be very welcome and we would love their subscriptions!!

At our meeting in March I did give advance warning that for our August meeting the car park may not be available to us. Unfortunately that is

now confirmed. Therefore those who must come by car are asked to find alternative parking on that occasion. If parking in one of the surrounding streets please take care not to obstruct access to residents' premises. Parking is also available near Cheadle Hulme Station, on the opposite side of the road. Everything should be back to normal for our September meeting.

As I write this (at the end April) our Vice-Chairman, Shirley Cawthra, is in hospital for a hip replacement. I am sure you all join me in wishing her a speedy recovery. We look forward to her being back with us soon.

To those of you going away during the summer, I wish you a very happy holiday. For those of us staying here, well there is always plenty of work to be done in the garden in spite of, or perhaps because of, global warming! Of course our regular meetings continue throughout the summer and I will look forward to seeing you then.

Best wishes, Paul Leigh

CHU3A Monthly General Meetings at 2pm in the Methodist Church Hall on Station Road, Cheadle Hulme, on the first Thursday of each month.

DATE	TOPIC	SPEAKER
7 th June	Well Dressing	Margaret Curry
5 th July	John Dalton The Man and his Manchester	John Doughty
2 nd August	Manchester Manor	Jennifer Fisher
6 th September	In the Steps of the Brontes	Margaret Curry
4 th October	A walk in Nepal	Kathy Potts
1 st November	The other side of living & working in Africa	David Norris
6 th December	*** Christmas meeting ***	

VISITORS: *Potential members are allowed one visit without joining, and need to pay £1 on that occasion. Visitors from other U3As, can come a maximum of three times a year and need to pay £1 each time towards Cheadle Hulme U3A's costs.*

This rule also applies to attendance at Groups of Cheadle Hulme U3A but the charge may vary.

CHU3A – Events Diary

The following events listed should be paid for in full, at the time of booking.
Please make cheques payable to *Cheadle Hulme U3A Events* and send to: *Shirley Cawthra*

Tue. June 19th 2.30 pm
The Chocolate House, Blackburn

Fudge and drinks on arrival. Free raffle tickets.
Live demonstration on the art of making chocolate.
Chocolate samples. Visit to Choc-House kitchen.
Light afternoon Tea. Shop.
£7.70 Meet at Glenfield Park reception.

Sun. 22nd July RHS Flower Show at Tatton

Set in the striking Cheshire countryside, this show offers a truly unique day out for everyone.
Pick up the bargains at the end of the show; items sold from 4.00 pm onwards.
£30 (entrance to Flower Show included).
Pick up at Fiveways, Hazel Grove at 9.55 am.

Sat. 14th July Belton House – The Jane Eyre Trail

Coffee en route to the fascinating house of Belton – where you can visit areas of the house which were used during the filming of the BBC’s 2006 adaptation of the Bronte classic. Belton also houses an important collection of paintings, furniture, tapestries and silver. There are also formal gardens, an orangery and lakeside walks.

NT members free. Non-members £7.00
Coach etc. £17.50
Pick up at Fiveways, Hazel Grove at 8.55 am.

Fri. 3rd August Skipton and Pennine Boat Cruise

Calling for coffee en route to Skipton, where we have time for a browse around the market and church. After lunch we board the boat for a leisurely cruise down the Leeds and Liverpool canal. Relax and enjoy the panoramic views of the Pennine countryside and soak up amazing views only seen by boat. Guided commentary and coffee and biscuits included in the cruise.
£21 Pick up at Fiveways, Hazel Grove at 9.25 am.

Wed. 18th July Royal Exchange
“Pretend you have big buildings”

11.00 am	Back Stage Tour	£ 2
2.30 pm	Performance	£10

Mon. 20th August Severn Valley Railway

Calling for coffee en route to Bridgnorth. Day at leisure including a one-way ticket to Kidderminster on the scenic Severn Valley Railway. Free to spend the day as you please – you could alight from the train at Bewdley or go straight into Kidderminster for afternoon tea. The coach will pick up in Kidderminster on the return.
£24.80 (includes single journey ticket)
Pick up at Fiveways, Hazel Grove at 8.25 am.

University of the 3rd Age
Summer School
9th - 20th July 2007

REMINDER

There may still be some places, but phone without delay for the Summer School at Stockport College.
Contact Heidi Walker: 0161 958 3266

British Empire/Commonwealth	1 day
Introduction to Internet & Email	1 day
Introduction to Computing	2 day
Design History	1 day
Desktop Publishing	2 day
Healthy Living & Complementary Therapies	1 day
Meditation, Stress Management & Relaxation with YOGA	2 day
Economical Cooking	2 day
Progression in Internet Skills	1 day
Creative Skills/ Card Making & Floristry	1 day
Progression in Computing	2 day

Cost: £13 1 day and £20 2 day course
Forms are available at the U3A desk

Family History Group

Ladybridge Sports and Social Club

Thanks to the assistance of the Stockport Local Heritage Library, who provided an article in the Stockport Advertiser in 1959, we have gleaned the following information about what were at that time, the Cheadle Hulme Cricket, Bowling, Tennis and Rugby Union Football Club!

The original club was established in 1831 by a small group of cricket enthusiasts who leased land from Mr Leather at Ladybridge Farm, and within a few years the club was able to field two teams. In the second half of the century a tennis section was added and in 1896 the first bowling green was opened. The First World War had its effect on the cricket section but, by 1933 the club was the possessor of cricket field, tennis courts and bowling green, five and a half acres of land in all.

In May 1939 a spanking new two-storey clubhouse was opened with comfortable lounge, bar, billiard table, badminton hall, dance floor with sprung floor

and dressing rooms. Sadly, just one year after the end of hostilities in Europe, in the small hours of 8th May 1946, disaster struck when this splendid building was destroyed by fire and with it most of the club's papers.

As our interest lies around the turn of the nineteenth century I indulged in a delightful trawl through the Stockport Advertiser for 1896 and established that:

In June the Cricket Club beat Bowdon by 40 runs. The last Saturday in August was the final of the bowling handicap. On December 4 the Cricket Club held its annual dinner at the Junction Hotel

Additionally, and quite irrelevant to the matter in hand, on April 10 a fire broke out in a haystack at Lane End Farm, a telegram was sent to the Fire Brigade in Stockport and by the time they arrived the fire had been put out !

Hilary Lightfoot

APPEAL to members of the U3A

"If anyone has any information about people they knew or indeed relatives who may have had a link to the War Memorial; or know of any families who were involved with home silk weaving, farming, the railways or other 19th century local history regarding Cheadle Hulme, the Family History Group would love to hear from you. If there is anyone prepared to be interviewed or who would like to lend any old photographs, or allow them to be copied for eventual insertion in a booklet we

hope to produce, would they please get in touch with any member of the Group or, in particular, Alison Davids or Judith Durrant who are usually at the monthly meetings.

Serious conversations would be collected from the autumn so people can enjoy the summer months and recollect any information. However, in the meantime it would be lovely if we could have some names and addresses from you in order for us to prepare to meet you and discuss our project."

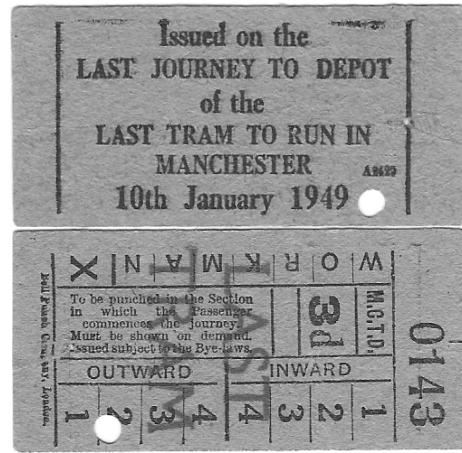
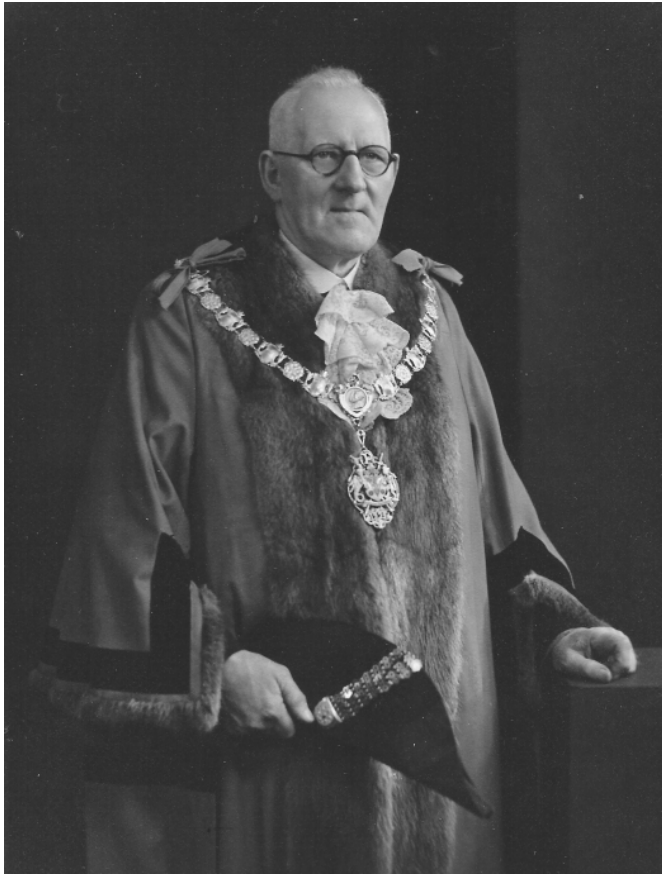
Judith Durrant

ANYONE FOR SCRABBLE ? Potential members should contact: Vera Lees

DID YOU KNOW ?

- A violin contains about 70 separate pieces of wood !
- One car out of every 230 made was stolen last year !
- A dentist invented the electric chair !
- The Mint once considered producing doughnut-shaped coins !

THE LAST TRAM - Anne Webster



The Beatles were singing about 'a ticket to Ride' at some time in the 1960s. They were already far too late to buy the ticket shown above, issued in 1949.

It was presented to Alderman Isaac Webster, Mayor of Prestwich 1948 -1950.

Although the tram he boarded so long ago made its last journey, a new breed of tram with a nod of acknowledgement to the railway has appeared. Like the "ITMA" character, they can say 'I go - I come back'.

Manchester's last tram, watched by crowds, takes its last trip from Piccadilly Gardens to the Birchfield Road Depot on 10th January 1949.



© Courtesy the Manchester Transport Museum Society archives

Ed: Have you a story to tell about yourself or a member of your family ?

THE WALKING GROUPS

Our group usually meets at 9.30am for a 9.45 start, on the second Wednesday of the month, in the car park of the United Reformed Church, Swann Lane, Cheadle Hulme. Walks are normally about 4/5 miles and incorporate a picnic or pub lunch as appropriate. The walks are announced at the monthly meetings and new walkers are always welcome.

On 18th April twelve members met and went in cars to Strines Station, midway between Marple and New Mills, where we parked. The day

was dry with some sunshine and ideal for walking. We walked up a steep hill to Brook Bottom. From there we continued upwards to near the clubhouse of New Mills Golf Club. En route we had views back towards Lyme Park Cage and left over Manchester with Winter Hill in the background.

We turned left and northwards on flatter roads/paths to Five Lane Ends at Upper Mellor. On our right were views over Kinder. We continued on along Shiloh Road, then left along paths with

many stiles, down to Mellor Church.

We had our picnic lunch with views over Manchester and westwards to Liverpool.

From the church we walked down to the Devonshire Arms at Mellor where we stopped for a drink, chat and rest. The walk then continued over Mellor golf course to Lower Clough where we turned right and dropped down back to Strines station. The walk was approximately five miles, with great views.

Keith Crowther

COMPUTER GROUP

Our regular training/learning sessions continue at the Café Unity in Heald Green on the second and fourth Mondays & Tuesdays of the month. John and George are helped by regular contributors Brian Durrant, Jean-Noelle Aiers, Peter Rhodes & John Murray – Gosh, almost one-to-one tuition !

Initially 17 members signed up and a waiting list of those interested has now been established. Costs per two-hour session have been set at £2.50 per person to start with. Eight computers plus a teaching machine using a video projector for large-screen demonstrations are available.

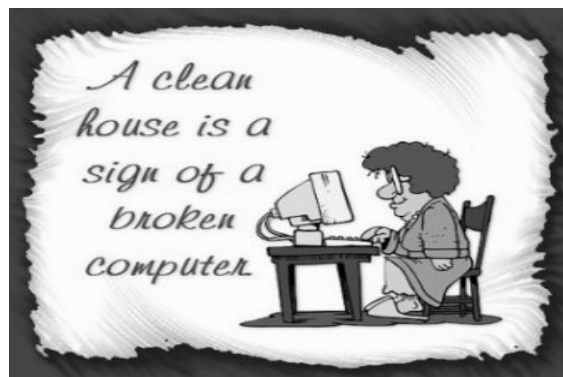
Website <http://www.chu3a.org.uk/>



Caféunity www.cafeunity.com

The Internet Cafe Proposal was initiated in August 2004. There are five churches in Heald Green: Brown Lane Methodist, St. Catherine's Church of England, Heald Green United Reformed, Christchurch Roman Catholic and Kings Way Fellowship. The churches co-operate together under the umbrella of "Churches Together in Heald Green", which is itself part of "Greater Manchester Churches Together".

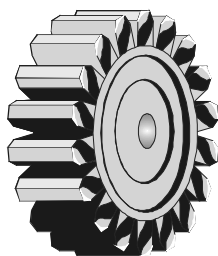
REMEMBER



Tina Menges

TECHNOLOGY

GROUP



Co-ordinator Ian Reid

The next meeting will be on Tuesday 2nd October 2007

Technology Group meetings are held on the first Tuesday of the month at the Heald Green village hall on Outwood Road commencing at 2.00 pm – 4 pm. (£1 per member is charged at each meeting to cover the cost of hall hire and tea/coffee)

We hope to have our usual summer outing; details will be given out at one of the monthly meetings.

March 6th - Mr Roy Frost gave a talk entitled Electricity in Manchester which was attended by 19 members. The advertised talk was on GM foods but unfortunately the speaker was unavailable; we were all very grateful to Roy for stepping in at the last minute. The presentation started by referring to the work of members of the Manchester Literary and Philosophical Society who made early contributions to our understanding of electricity and magnetism. These included William Sturgen who invented the electro magnet in 1830 and Henry Wild who it was claimed invented the dynamo.

As early as 1878 a private electricity supply was installed in the Theatre Royal, Peter Square. Manchester's first public supply was provided when the Corporation raised money to build the Dickinson Street Lighting works. The first public supply in Britain was actually produced by Ferranti in Deptford London. One of the chief architects of the Dickinson Street works was Dr John Hopkinson who unfortunately died with members of his family in a climbing accident in Switzerland and was succeeded by a Mr Wordingham as chief engineer at a salary of £600 per year, a very high salary for the time. Bloom Street station was built in 1902 to satisfy the rapidly increasing demand for electricity. Waste steam from this works was used to heat local buildings such as

the Refuge building. Nothing is new, combined heat and power is now being proposed as part of the solution to our current energy problems.

Until 1890 electricity was principally used for lighting. The Stewart Street power station was however built to provide power for traction and the age of the electric tram was born. The fourth station to be built was at Barton on the Ship Canal. This latter station had a higher efficiency than any other operating at that time.

Roy went on to talk about the way the provision of electrical supplies has improved the social conditions of people by allowing them to live further from their places of work as a result of affordable transport and also through the use of domestic appliances. This section of the talk was illustrated with old advertisements for domestic appliances. It says something about the audience that many of these appliances were fondly remembered, particularly by the ladies. The 1920 Magnet Electric Wizard was particularly interesting in that it was claimed to wash, mangle, wring, make ice cream and also sausages. By 1914 a full range of appliances were available, all made in Britain, yet few people had an electricity supply. Manchester Corporation demonstrated the all electric house in 1926. This was at 189 Errwood Road, Burnage. The cost of providing a supply to a house was paid for through

The Assisted Wiring Scheme through which a small sum was added to the electricity bill over a number of years.

It is difficult to condense a great deal of information into a short report. A more complete account can be obtained by reading Roy Frost's book entitled Electricity in Manchester 1893- 1993.

Brian Pullan

April 3rd - 16 members attended a talk by Dr Leslie Davies on the subject of food additives. The talk started with a slide showing the ingredients of a common but unnamed food which is widely available in local shops. In addition to water and sugars the product contained eight E-numbered chemicals. The audience were invited to guess what the product was and when nobody guessed correctly were surprised to learn that it was a tomato! The E-numbered substances in the tomato were naturally occurring chemicals, illustrating the fact that E-numbered substances are not necessarily bad, as many people think, but are simply approved chemicals that can occur naturally. Giving a substance an E-number simply means that it has passed safety tests and has been approved for use in the U.K. and the rest of the European Union. The use of additives is allowed only when there is a technological need, the customer is not misled and the additive presents no hazard to health. European Union

legislation requires (with some exceptions such as chocolate and alcoholic drinks) that food labels list ingredients by descending order by weight with each additive identified by function. Flavourings need not be named.

The talk went on to review food additives and the reasons why they are added. The main reasons were to maintain wholesomeness and palatability, to enhance flavour and impart colour, to provide leavening or control acidity, to maintain consistency and texture and to improve nutritional value by adding vitamins and minerals. Examples were given of substances used as preservatives, anti oxidants, emulsifiers,

stabilisers, colouring agents, acidulants, sweeteners and flavours. It was emphasised that, contrary to popular belief, not all food additives are artificial and that sugar and salt are amongst the most common additives together with slightly burned sugar, or caramel, which is by far the most commonly used colouring used in foodstuffs.

Food testing and regulatory procedures were discussed briefly and the talk then went on to deal with the subject of food allergy and intolerance. Results from a survey of 18000 people were presented. In this survey 1 in 5 people perceived that they had intolerance to particular foods

when in fact only 1 in 70 actually had a problem. In the case of food additives 1 in 20 perceived that they had a problem when in fact only 1 in 10000 actually had a problem. This shows that food itself is a much bigger source of intolerance and allergy than additives. The foods to which people are commonly allergic were listed and included milk, eggs, wheat, soya, nuts, soft fruits, fish and shellfish.

The talk concluded with a further discussion of E-numbers and the usual lively question and answer session.

Brian Pullan



ITEMS ALWAYS WELCOME FOR YOUR NEWSLETTER !

If you would like items published in the Newsletter, please hand them to the Newsletter Editor at one of the Members' Meetings

**Closing date for copy for the next Newsletter
at the Members Meeting on Thursday 2nd August 2007**

Especially for the ladies ?

I don't iron because ...

I choose to believe them
when they say "Permanent Press".

I don't put things away because ...

My husband will never be able to find them
again.

I don't disturb cobwebs because ...

I want creatures to have a home of their own.

I don't do windows because ...

I love birds and don't want one to run into a clean
window and get hurt.

(Tina Menges)